

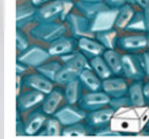


Rose Montee
Resort Cuff



Materials Needed:

60" Thread
2 Beading Needles
1 Set of Pliers
Glue



DIAMOND DUO™ 2-HOLE
BEAD 5X8MM PASTEL
AQUA - 50 GRAM BAG (APX
340 PCS)
PRODUCT #: DD/25019/58

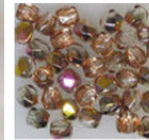
Apx. 22 Beads Needed



ROSEMONTEES PRECIOSA
MC VIVA12 SS16 CRYSTAL
APRICOT ON GOLD PLATE
- 144PCS
PRODUCT #: RM7982/AP/16G



Apx. 42 Beads Needed



2TINY™ 2MM CRYSTAL
ROSEGOLD FIRE POLISH
LOOSE (PRICED PER
100)
PRODUCT #: FP/28009/2

Apx. 125 Beads Needed



6MM 20G (0.76MM) OPEN
JUMP RING 14K GOLD
FILLED 50PCS
PRODUCT #: GFRI3303/20G/6

2 Pieces Needed

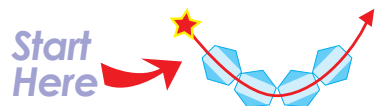


6MM MAGNETIC CLASP
GOLD PLATE (PRICED
PER 100)
PRODUCT #: CL289M/GL

1 Set Needed

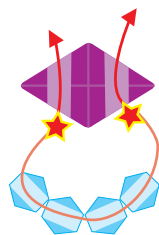
Create Original FP Loop

1) Attach a needle to each end of a 29" length of thread. Using one length, thread 4 FP.



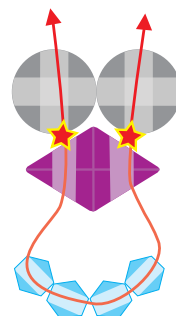
Add DiamonDuo™

2) Pass through the left and right holes of a DD, using the left and right lengths of thread, respectively. Pull to tighten loop.



Add Rose Montee

3) Add 1 RM to both lengths of thread, moving vertically.

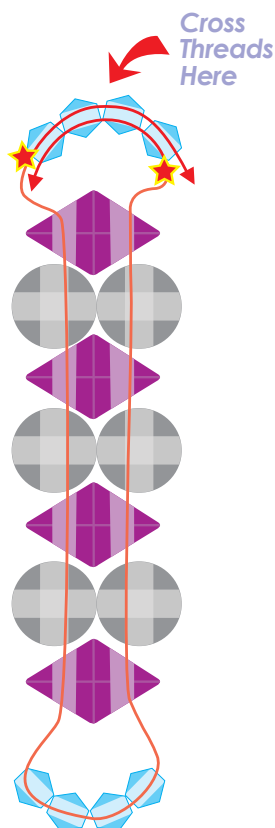


Repeat Steps 2-3 Until Desired Length of Bracelet is Reached.

KEY	
	Entry Point
	Half-Hitch Knot
	Thread's Direction
	Previous Steps
	= DiamonDuo™ DD
	= 2 Tiny™ 2mm Fire Polish Bead FP
	= Rose Montee RM

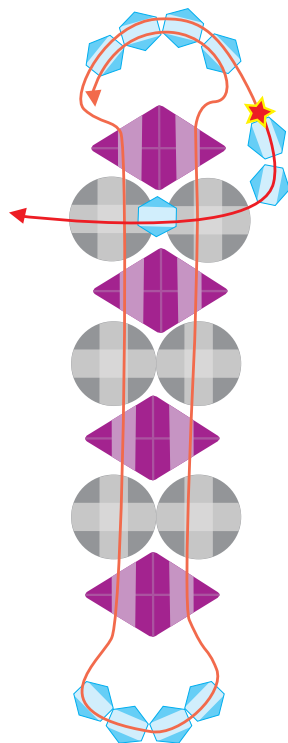
Cross Threads / Create 2nd FP Loop

4) Thread 4 FP with one thread first. Thread those same beads using the other length of thread, but going in the opposite direction.



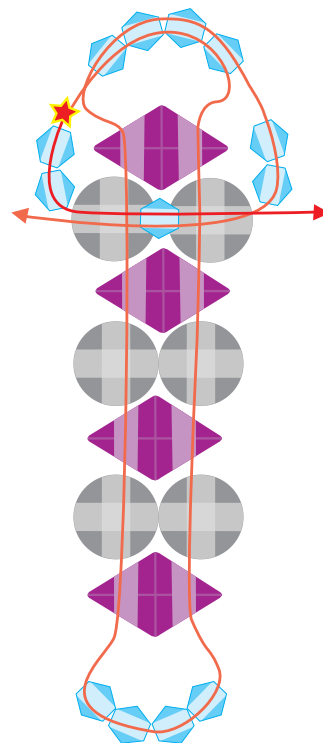
Re-thread Rose Montees

5) Using one length of thread, add 2 FP. Pass back through adjacent RM, moving in a lateral direction, so that both perpendicular holes of RM are now threaded. Add 1 FP between the 2 RM, then continue through adjacent RM, moving in a lateral direction. Pull to tighten.



Re-thread Rose Montees

6) Using the other length of thread, add 2 FP. Pass through the RM just threaded, now threading in the opposite direction. Thread the center FP, then thread the adjacent RM, continuing in this lateral direction.



Repeat Steps 5-6 Until FP Beads Embellish Entire Length of Bracelet

Tuck Knots / Add Jump Rings

7) When original loop is reached, re-thread through FP loop using both lengths of thread. Tie half-hitch knot to both lengths of thread, and pull not inside RM and tuck.

