



*Design by Helena Chmelíková*

**PRECIOSA Rocailles**

331 39 001; 8/0



*Preciosa Ornela introduces beads and seed beads  
from the PRECIOSA Traditional Czech Beads™ brand.*

Preciosa-Ornela.com



SEED BEAD CHRISTMAS TREE

# Christmas *inspiration*

PRECIOSA

# Christmas inspiration

Are you looking for Christmas inspiration for a decoration and for your beadwork? We will show you how to make a seed bead Christmas tree that you can use to playfully decorate gifts, your Christmas tree, some branches or even yourself with pretty Christmas earrings or a pendant on a necklace. Use PRECIOSA Terra Intensive Matt seed beads and the pressed beads from the PRECIOSA Terra Intensive collection to achieve a distinctive color design. We wish you many pleasant hours spent Christmas beadworking with Czech seed beads.

## Materials and tools:

PRECIOSA Rocailles (R10)  
331 39 001; 10/0  
16A58 dark green; 22x



331 39 001; 8/0 (R8)  
16A58 dark green; 284x



331 39 001; 8/0 (RM8)  
a mixture of colors a mixture of colors  
(16A86, 16A91, 16A77,  
16A26, 16A98, 16A28, 16A38); 46x



PRECIOSA Pressed Beads (PB)  
111 19 001; 6 mm;  
02020/34260 brown; 1x



- the necklace - a guide (24 holes);  
an eye pin; earring hooks; rings; a cord



- a 0.20 mm or 0.30 mm nylon line;  
a thin needle; scissors; needle-nose pliers;  
snipping pliers; a ruler



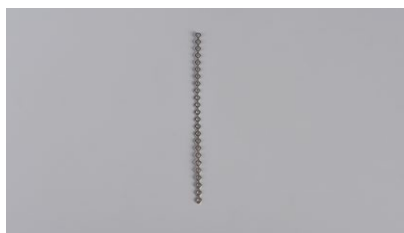
Difficulty: ●●●●●

**Technique:** stringing, simple sewing

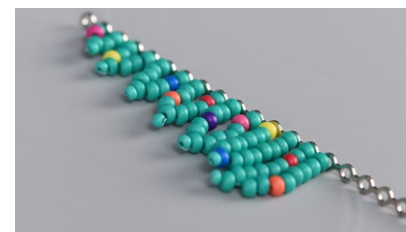
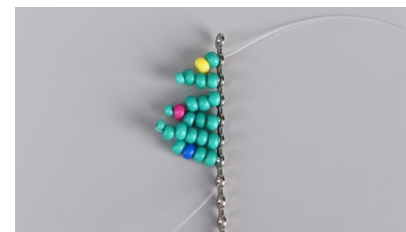
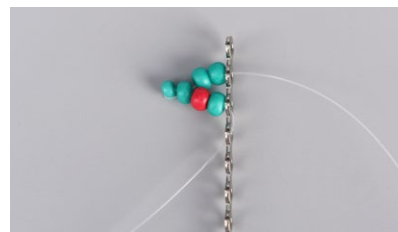
## Procedure:

### The necklace

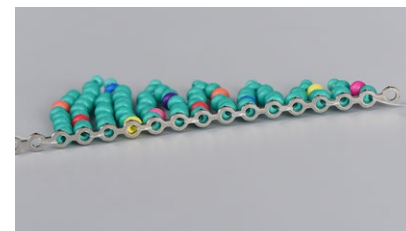
**Step 1:**  
Prepare a guide with 24 eyes.  
Straighten the guide and snip the metal  
strip close to the eye.



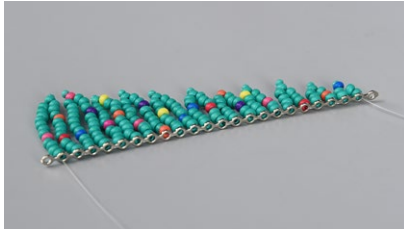
**Step 2:**  
Cut off about 170 cm of line.  
String it through the second hole  
on the guide. Place the guide approximately  
in the middle of the line. This means that  
the line will have a left-hand and a right-  
hand section. String 3x R8 and 1x R10 onto  
one section of the line. Thread the line  
through the last R8. String 2x R8.  
Thread the line through the next (third)  
hole on the guide. Thread the line through  
the next (fourth) hole in the guide.  
Tighten it.



**Step 3:**  
Continue stringing the other projections  
so that there is always 1x R10 at the top.  
The number of R8 will increase by 1x R8.  
Always add 1 less R8 after threading  
the line through the last R8 in each  
projection.  
The R8 stringing on the projections -  
4x, 5x, 6x, 7x, 8x, 9x, 10x, 11x, 12x and 13x.  
Sew a total of 11 projections.  
Replace 1x R8 with 1x RM8 on the shortest  
three projections, 2x R8 with two RM8  
on the next four and 3x R8 with three RM8  
on the longest three.







Step 4:  
String the same 11 projections on the other side of the line.



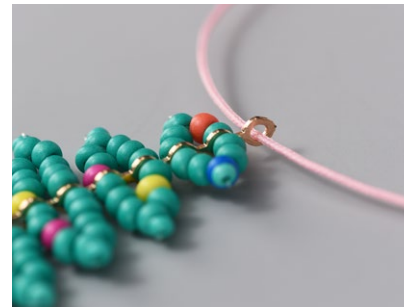
Step 5:  
If the longest projections are soft, you can thread the line through them one more time. The length of the line should enable this. The line will change sides (from the left to the right and vice versa). At the end, tie off the line with three knots. Pull the end into the R8 and cut it off.



Step 6:  
Link the PB onto the eye pin.  
You will need 8-10 mm of protruding wire.  
Grasp the edge of the wire with the pliers.  
Twist it around the points of the needle-nose pliers. Connect it to the outer lower hole of the guide before completely closing the eye.



Step 7:  
Tie the cord, a ribbon or an earring hook to the top hole on the guide.



You can make Christmas trees in various color shades and different sizes or use them to brighten up your holiday outfit.

