



Ginko Lace Earrings

Make these cute lacy earrings with new Matubo Ginko beads.



Material (for one pair of earrings)

Matubo Ginko (12 pcs)

Matubo 8/0 (12 pcs)

Matubo 11/0 (approx. 1 gram)

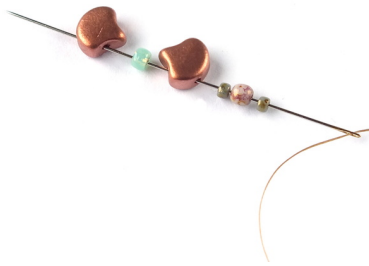
15/0 Miyuki seed beads (approx. 1.5 gram)

3mm round beads (12 pcs)

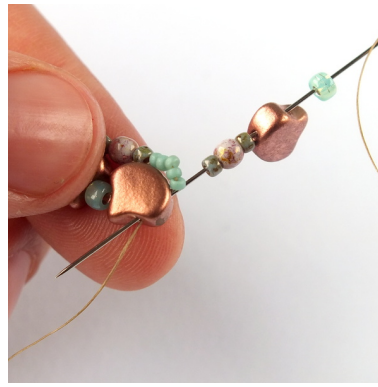
Jump rings, earring components

Beading needle and thread (Nymo, Fireline...)

Difficulty: For beginners/intermediate



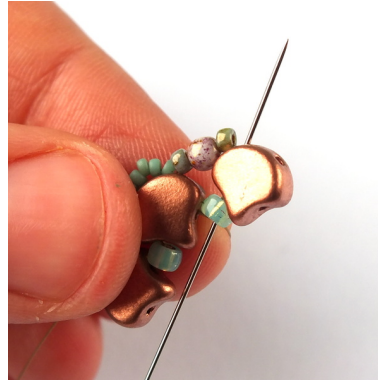
1) String 11/0, one 3mm round, one 11/0, one Ginko (from the outside), one 8/0 and one Ginko (from the inside).



6) Add one 8/0, one Ginko (from the inside), one 11/0, one 3mm round and one 11/0 and then go down through the same hole of the same Ginko again.



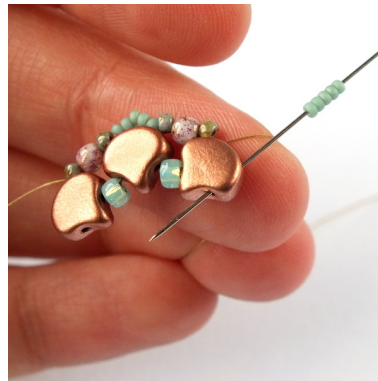
2) Slide all the beads to the end of the thread and tie a square knot to form a circle. This is what you should get.



7) Pass through the new 8/0 and then go up through the nearest hole of the new Ginko.



3) Go down through the nearest hole of the nearest Ginko bead.



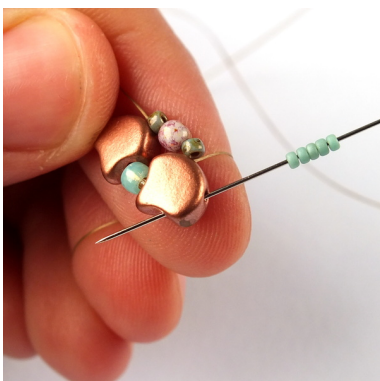
8) Add five 15/0s and go back down through the free hole of the same Ginko the thread is exiting from



4) Pass through the nearest 8/0 and then go up through the nearest hole of the nearest Ginko.



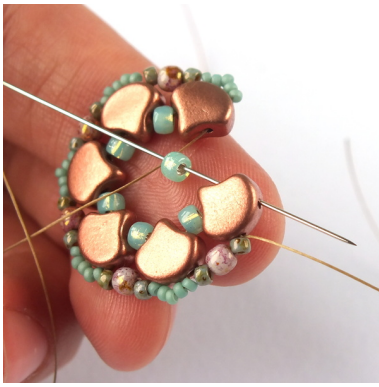
9) Repeat steps 6 - 8...



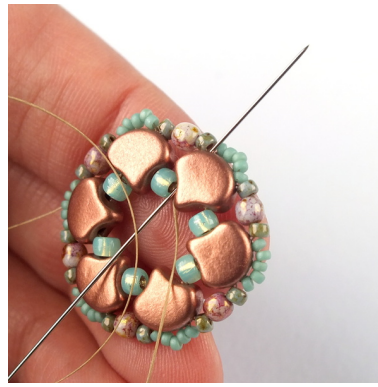
5) Add five 15/0s and go back down through the free hole of the same Ginko the thread is exiting from.



10)... three more times.



11) Now you need to connect both ends together. Add one 8/0 and go up through the free hole of the Ginkgo bead on the other end.



16)... and then go up through the nearest hole of the next Ginkgo.



12) Add one 11/0, one 3mm round and one 11/0 and then go down through the same hole of the previous Ginkgo bead again.



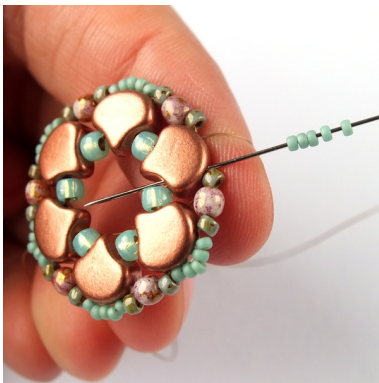
17) Pass through the nearest 11/0.



13) Pass through the new 8/0 and then go up through the nearest hole of the nearest Ginkgo.



18) Add four 15/0s and pass through the next 11/0 and the next two 15/0s.



14) Add five 15/0s and go back down through the other hole of the same Ginkgo the thread is exiting from.



19) Add three 11/0s. Skip the next 15/0 and pass through the next two 15/0s and one 11/0



15) Pass through the nearest 8/0...



20) Repeat steps 18 and 19...



21)... until you reach the end of the row.



26) Add two 15/0s and pass back through the new 11/0.



22) Pass through the next four 15/0s...



27) Add three 15/0s and pass through the nearest two 15/0s above the next Ginko bead.



23)... through the next 11/0 and three 15/0s...



28) Pass through the next 11/0.



24... and through the next two 15/0s.



29) Skip the next 11/0 and pass through the next 11/0 and the next two 15/0s.



25) Add three 15/0s, one 11/0 and two 15/0s and then pass through the nearest 8/0.



30) Repeat steps 25 - 29...



31)... until you reach the end of the row.



32) (Optional) Add one 11/0 and one 15/0 and pass through the next group of four 15/0s.

33) (Optional) Add one 15/0 and one 11/0 and pass through the next three 11/0s.



34) (Optional) Repeat steps 32 and 33, until you reach the end of the row.



35) Tie a few half-hitch knots and cut off all the remaining thread. The earring is finished.



36) Use a small jump ring to attach earring components and optional embellishment to the earring.

Colorways:



Matubo Ginko 03000/29123
Matubo 8/0 63130
Matubo 11/0 00030/01670
3mm round 93140/15494
Miyuki 15/0 2002 Matte Metallic Silver Grey



Matubo Ginko 03000/15726
Matubo 8/0 23980/14400
Matubo 11/0 23980/15001
3mm round 02010/25125
Miyuki 15/0 135FR Matte Transparent Brown AB



Matubo Ginko 00030/26440
Matubo 8/0 93200/85001
Matubo 11/0 00030/01710
3mm round 93200/15001
Miyuki 15/0 1464 Dyed Opaque Maroon



Matubo Ginko 00030/01780
Matubo 8/0 61100/81800
Matubo 11/0 03000/65435
3mm round 03000/15695
Miyuki 15/0 2028 Matte Seafoam Luster