



Palmyra Earrings/Bracelet

These little oval-shaped components make cute earrings or can be used as bracelet components



Material (for one component)

Matubo Ginko (2 pcs)

Matubo Gemduo (2 pcs)

Matubo 8/0 (2 pcs)

Matubo Miniduo (12 pcs)

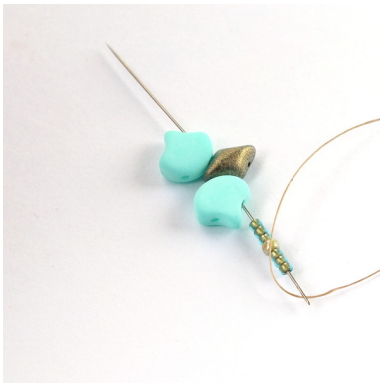
Matubo 11/0 or TOHO 11/0 (14 pcs, approx. 0.15 gram)

TOHO 15/0 (20 pcs, 0.1 gram)

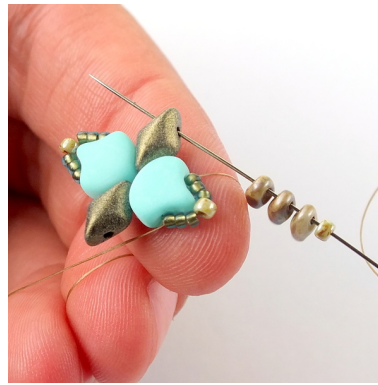
Jump rings, other findings, depending on the kind of jewelry you wish to make

Beading needle and thread (Nymo, Fireline...)

Difficulty: For beginners/intermediate



1) String three 15/0s, one 11/0, three 15/0s, one Ginko (from the inside), one GD, one Ginko (from the outside).



6) Add one 11/0 and three Miniduos and pass through the upper hole of the nearest GD.



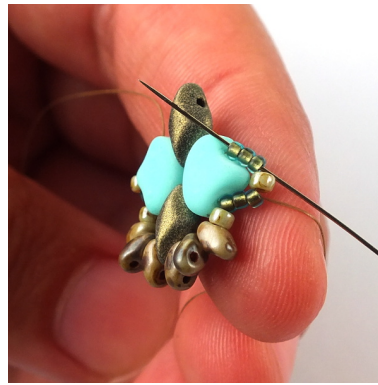
2) Add three 15/0s, one 11/0 and three 15/0s and pass back through the free hole of the last Ginko.



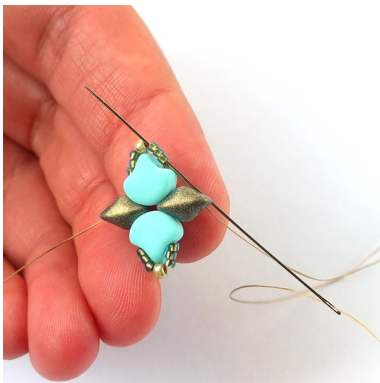
7) Add three Miniduos and one 11/0 and then pass through the next three 15/0s



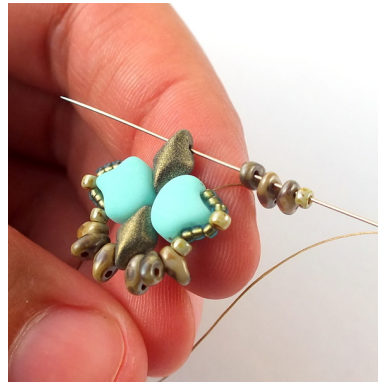
3) Add one GD and pass through the free hole of the next Ginko.



8) Skip the next 11/0 and pass through the next three 15/0s.



4) Tie a square knot to form the base of the component. Then pass through the nearest three 15/0s.



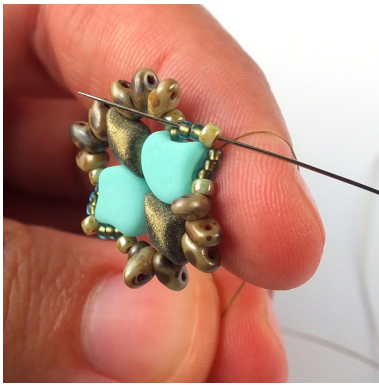
9) Repeat steps 6 and 7 ...



5) Skip the 11/0 and pass through the next three 15/0s.



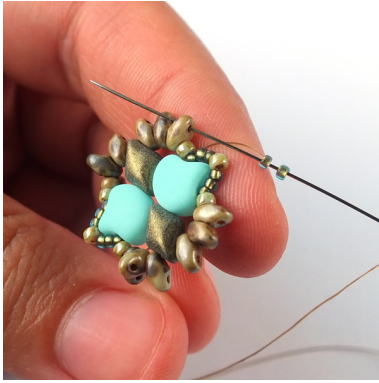
10) ... until you reach the end of the row. The thread should exit from the first three 15/0s.



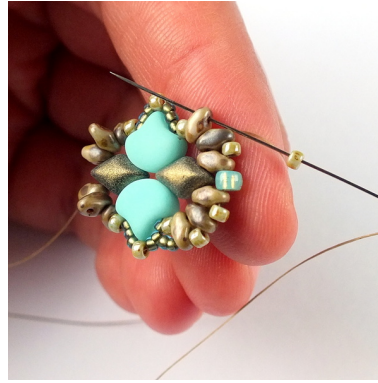
11) Pass through the next 11/0 and the next two 15/0s.



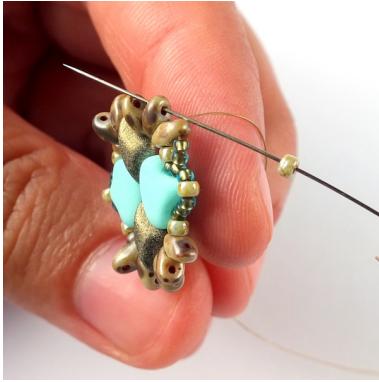
16) Add one 11/0 and pass through the upper hole of the next Miniduo.



12) Add two 15/0s and pass through the upper hole of the next Miniduo.



17) Add one 11/0 and pass through the upper hole of the next Miniduo.



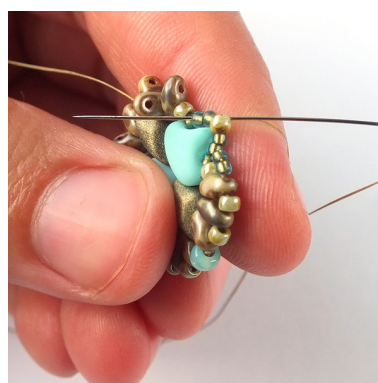
13) Add one 11/0 and pass through the upper hole of the next Miniduo.



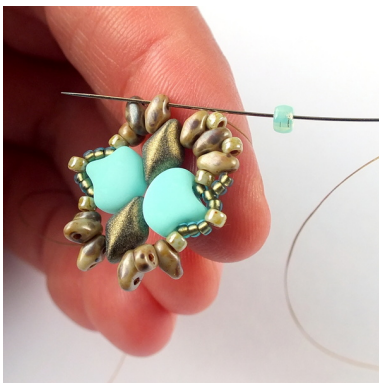
18) Add two 15/0s and pass through the upper two of the next three 15/0s, the next 11/0 ...



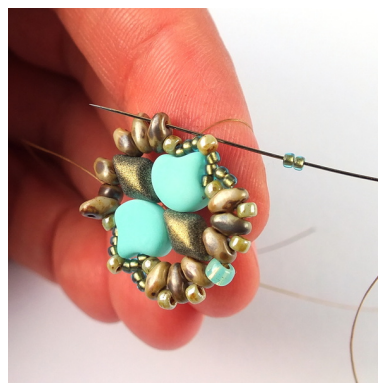
14) Add one 11/0 and pass through the upper hole of the next Miniduo.



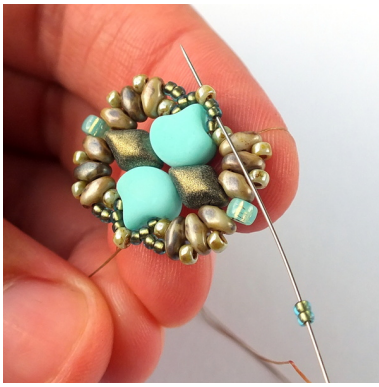
19) ... and the next two 15/0s.



15) Add one 8/0 and pass through the upper hole of the next Miniduo.



20) Repeat steps 12 - 19 ...



21) ... until you reach the end of the row.



22) This is what you should get. Weave through the last row one more time and then tie a few half-hitch knots and cut off all the remaining thread.



23) For earrings, use jump rings to connect earring components and possible embellishment (drop-shaped beads, small charms, tassels ...) to the 8/0s.



24) If you want to make a bracelet, you can just connect the individual components with jump rings - or you can use a few extra beads and weave them together to create a more intricate bracelet.

Colorways:



Yellow-Blue

Matubo Ginko 93200/83500
 Matubo Gemduo 63130
 Matubo Miniduo 23980/81002
 TOHO 11/0 CC1623F
 Opaque Frosted Gold Luster Yellow
 TOHO 15/0 2634F
 Semi Glazed Rainbow - Turquoise
 Matubo 8/0 93200/85001



Red-Turquoise

Matubo Ginko 83120/83500
 Matubo Gemduo 63030/85001
 Matubo Miniduo 23980/81002
 TOHO 11/0 711 Nickel
 TOHO 15/0 2634F
 Semi Glazed Rainbow - Turquoise
 Matubo 8/0 63130/15001



Coral pink:

Matubo Ginko 02010/92944
 Matubo Gemduo 23980/79080
 Matubo Miniduo 03000/85455
 Matubo 11/0 03000/14497
 TOHO 15/0 PF552 PF Galvanized
 Sweet Blush
 Matubo 8/0 23020/85805

Turquoise:

Matubo Ginko 02010/92928
 Matubo Gemduo 23980/79080
 Matubo Miniduo 03000/85455
 Matubo 11/0 03000/65455
 TOHO 15/0 995F Bronze Lined Aqua Rainbow Matte
 Matubo 8/0 61100/81800