



*So Sassy  
By Susan Sassoon*

## TILA CYMBAL BRACELET

BY SUSAN SASSOON

[www.SoSassyBySusanSassoon.com](http://www.SoSassyBySusanSassoon.com)



Tila, Half Tila and Quarter Tila beads used with coordinating Cymbals findings create a professionally finished look on this sleek bracelet.

**Skill Level: Intermediate and up**

**Techniques to know:** Square stitch, brick stitch

**Finished size:** about 7 inches

### MATERIALS

2 Piper II Cymbal™ Bead Endings™

1 center Cymbal™ Connector

26 Miyuki Tila beads

44 Miyuki Half Tila beads

100 Miyuki Quarter Tila beads

1 gram size 11 seed beads

3 grams size 15 seed beads

8mm (ss39) Swarovski Rivoli

4 Peponas Cymbal™ Bead Substitute™

4 Flatback Preciosa Crystals ss16 (optional)

1 toggle clasp

2 jump rings

#11 beading needle

Fireline to match/blend in, 6lb

Scissors or thread zapper

E6000 glue

Please respect my designs by not reselling or altering my patterns in any way. Do not replace or modify text, images, names, logos, or URLs. Feel free to recreate this design for personal use and limited sales but not for mass production.

Permission to teach this pattern is exclusive to customers of The Beadsmith.

Step 1: String a stop bead on a comfortable length of thread leaving a 4” tail (You will need to weave in additional thread). Place a Tila bead in the center of the Bead Ending so that the holes of the Tila align with the holes of the Bead Ending. String a Bead Ending (through the hole closest to the clasp end), and then pass through the aligned Tila and the opposite side of the Bead Ending. Turn around and pass through the open hole of the Bead Ending, Tila and opposite side of the Bead Ending. Turn around and pass again through the first holes of the Bead Ending, Tila and Bead Ending, the second hole of the Bead Ending and second hole of the Tila. Do not pass through the next Bead Ending. You will need to angle the Tila away from the Bead Ending in order to get the needle out of the work in the right place.

Step 2: Square stitch the next Tila bead as follows: String a tila and pass through the Tila you are exiting and the first hole of the Tila just strung. Turn around and pass through the second hole of this Tila. Repeat for the desired length. For a 7” bracelet, you will need a total of 13 Tilas on each side of the center, including the Tila from Step 1. *Option: Step 8 will describe how to embellish this center row of Tilas with the Peponas Bead Substitutes, however, you have the option of stitching them directly into this row during this step. The result will be a flatter bracelet. If you choose to do this, plan your spacing of them to get them as equally spaced as possible for your wrist size.*

Step 3: After stringing the last Tila on this side, turn around and pass through the open hole of the Tila you are exiting and then string the first hole of the Cymbals™ Connector by placing the Tila in the center “niche” and pointing the needle towards the outside of the connector. String four 15/0 seed beads, a Quarter Tila (QT), Half Tila (HT), another QT and 15/0 seed bead. Pass through the closest hole of the second to last Tila. String a 15/0, QT, HT, QT and four 15/0 seed beads. Pass through the second hole of the Cymbals™ Connector, the center Tila and the first hole of the Connector, the next four 15/0s, QT, HT, QT, Tila, QT, HT, and QT.

Step 4: String three 15/0 seed beads. Pass through the second hole of the QT, HT, and QT. String a 15/0 seed bead. Pass through the second hole of the adjacent Tila. String a 15/0 seed bead. Pass through the second hole of the next QT, HT and QT. String three 15/0 seed beads. Pass through the first hole of the previously strung QT, HT, QT, 15/0, tila, 15/0 QT, HT, QT, three 15/0 seed beads, and then pass through the second hole of the previously strung QT, HT, QT, 15/0, Tila, 15/0, QT, HT, and QT.

Step 5: String a 15/0 seed bead, QT, HT QT and 15/0 seed bead. Pass through the first hole of the next Tila. String a 15/0 seed bead, QT, HT, QT, 15/0 seed bead, and then pass through the second hole of the last step’s QT, HT, QT, 15/0, Tila, 15/0, QT, HT, QT, and then the beads strung in this step: 15/0, QT, HT, QT, 15/0, Tila, 15/0, QT, HT, and QT.

Repeat Steps 4 and 5 until you reach the opposite end of this half of the bracelet.

Step 6: String two 15/0 seed beads and pass through the Bead Ending, Tila, and Bead Ending. String two 15/0 seed beads and pass through the previously strung QT, HT, QT, Tila, QT, HT and QT. Secure the thread and trim. Remove the stop bead and weave in the tail thread and trim.

Please respect my designs by not reselling or altering my patterns in any way. Do not replace or modify text, images, names, logos, or URLs. Feel free to recreate this design for personal use and limited sales but not for mass production.

Permission to teach this pattern is exclusive to customers of The Beadsmith.

Repeat Steps 1-6 for the opposite side of the bracelet.

Step 7: Choose the locations of the Tila beads you'd like to embellish with the Peponas Bead Replacements. Weave in a new thread, working your way through the beads to exit the QT nearest the Tila to be embellished. String a 15/0 seed bead, the first hole of the Peponas, and another 15/0 seed bead. Pass through the next QT, HT, QT and three 15/0 seed beads. Pass through the second hole of the QT, HT, QT. String a 15/0 seed bead, the second hole of the Peponas, and another 15/0 seed bead. Pass through the next QT, HT and QT. Repeat at the next Tila to be embellished. Secure the thread and trim. Using E6000, glue a flatback crystal on to the center of each Peponas (optional).

Step 8: Use brick stitch to stitch 15/0s along the perimeter of the center connector. Begin a new thread, approximately 5 feet long. Pass up through the first triangular shaped hole on the perimeter of the connector. String a 15/0 seed bead and pass up through the triangular shaped hole again, and up through the 15/0 so that the 15/0 sits with it's hole facing up on the edge of the metal circle. String a 15/0 seed bead and pass up through the next oval shaped hole and 15/0. Continue around the circle, alternating between the triangular holes and the oval holes along the perimeter of the circle. When you get to the end of the side, go down through the nearest triangle, up through the oval hole that attaches to the Bead Ending portion of the connector and up through the next triangle. Then continue to brick stitch around the circle. Exit by passing up through the last 15/0 added in this round.

Step 9: String a 15/0 seed bead and pass down through the next 15/0. Pass up through the next 15/0. String an 15/0 seed bead and pass down through the next 15/0 and up through the next 15/0. Continue to complete one side of the component. At the last 15/0, work in the opposite direction as follows: String an 11/0 and pass down through the next 15/0 and up through the next 15/0. Repeat until you have four 11/0s sitting between each of the five 15/0s. Pass through the triangles and ovals as you did in step 9 and repeat this step on the opposite side of the circle. Pass down through a triangular hole and then up through an oval hole.

Step 10: Use square stitch to add 11/0s between each oval hole around the center circle as follows: String an 11/0 seed bead. Pass down through the adjacent oval hole and then up through the first oval hole and through the 11/0 seed bead just strung. Pass down through the next oval and up through the oval after that. String an 11/0 seed bead and pass down through the previous oval and up through the next oval. Repeat until you have twelve 11/0s around the circle, sitting between each oval hole. Pass through the next 11/0.

Step 11: Figure 8: Place the rivoli into the center of the connector.

Step 12: Figure 9: String a QT. Pass through the next 11/0. Repeat 11 times to complete the circle. Pass through all of the QTs and 11/0s in this round to tighten. Exit a QT and then turn around by passing through the open hole of the QT you are exiting. Pass through the open hole of the next QT. Repeat 11 times to complete the round, cinching the ends of the QTs tight to each other. Reinforce this round with firm tension to hold the rivoli snugly in place.

Please respect my designs by not reselling or altering my patterns in any way. Do not replace or modify text, images, names, logos, or URLs. Feel free to recreate this design for personal use and limited sales but not for mass production.

Permission to teach this pattern is exclusive to customers of The Beadsmith.

Step 13: Figure 10: Work through the beads until you are exiting the last 15/0 seed bead on the outer edge of the connector. Peyote a 15/0 seed bead between each of the 11/0s and 15/0s in this outer row. Secure the thread and trim.

Step 14: Use jump rings to add the clasp to the Bead Endings.



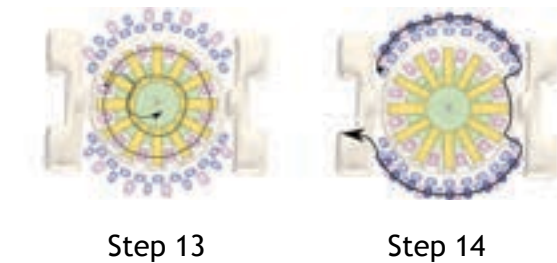
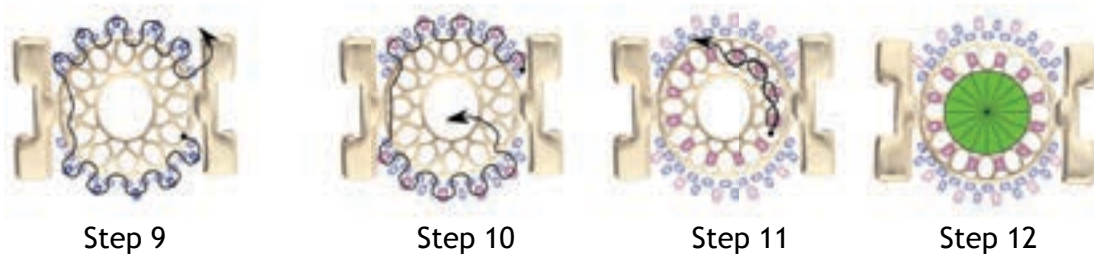
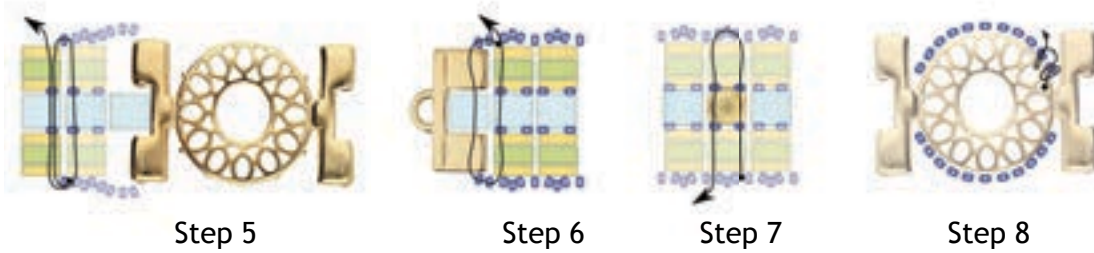
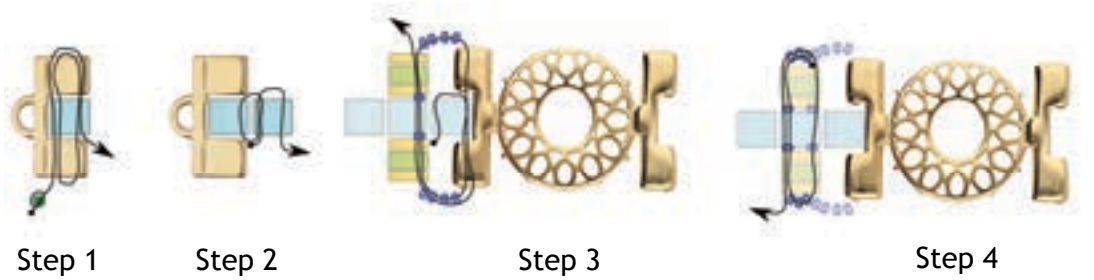
Susan is an architect and beader who loves fitting together shapes of all sizes. She is a 2019 Beadwork Magazine Designer of the Year and her work has been published in other beadwork magazines as well.

She is a member of the Beadsmith Inspiration Squad and sells her tutorials at [www.etsy.com/shop/sosassysusansassoon](http://www.etsy.com/shop/sosassysusansassoon) and [www.sosassybysusansassoon.com](http://www.sosassybysusansassoon.com) . She can be reached on her Facebook Page: So Sassy By Susan Sassoon or via email: [sosassybysusansassoon@gmail.com](mailto:sosassybysusansassoon@gmail.com).

Please respect my designs by not reselling or altering my patterns in any way. Do not replace or modify text, images, names, logos, or URLs. Feel free to recreate this design for personal use and limited sales but not for mass production.

Permission to teach this pattern is exclusive to customers of The Beadsmith.

### Bead Legend



Please respect my designs by not reselling or altering my patterns in any way. Do not replace or modify text, images, names, logos, or URLs. Feel free to recreate this design for personal use and limited sales but not for mass production.

Permission to teach this pattern is exclusive to customers of The Beadsmith.