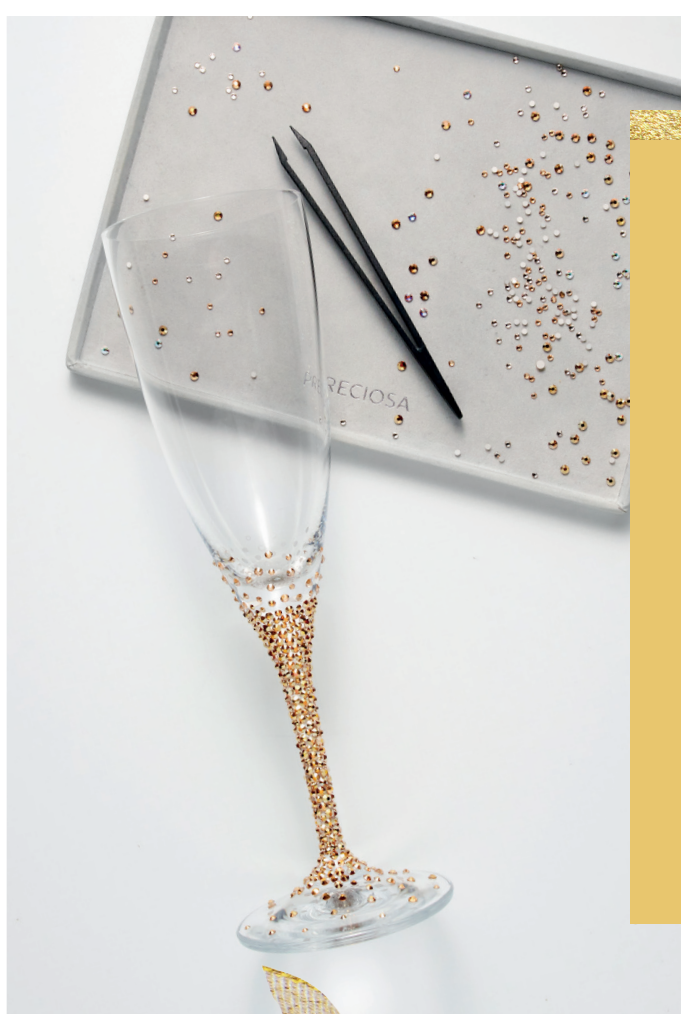
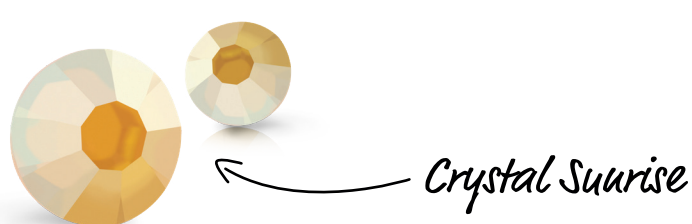




Design to Shine!

CHAMPAGNE FLUTES



EXPERT TIP #1

Use two to four sizes of no-hotfix Preciosa® Chaton Roses MAXIMA (instead of just one), making it easier to achieve a tight pavé.

We used sizes ss6, 8, 10 and 12.

EXPERT TIP #2

Start at the bottom. Using a two-part epoxy glue, begin applying crystals at the base of the stem, gradually working your way upward.



EXPERT TIP #3

Let the flutes dry for at least 10 hours before using.

To clean, hand wash with standard dish soap.

CHEERS!