

7b.



Step 8:
The base of the flower is now complete. Pass the needle through a set of four **R11**. Pick up a **FPB12** and thread the needle through the opposite set of four **R11**. To strengthen the flower sew through the **FPB12** several times. See Figures 8a and 8b.

8a.



8b.



Step 9:
Sew around the flower as shown in Figure 9.

9.



You have now created one flower component. You will need five or six flowers for the bracelet depending on how large you want the bracelet to be. Join the individual flowers using **R11** and add a magnetic clasp set to join the ends.

If you would rather create a set of earrings do not attach the centre **FPB12** using beading thread. Use an earring pin to thread the **FPB12** and pass this through a set of four **R11**. Attach the pin to an earring finding.



DESIGN BY HANA ČERNÁ

Clever and imaginative beaders are sure to find many ways to use PRECIOSA Chili™ to create jewelry of their own.

PRECIOSA ORNELA introduces beads and seed beads from the PRECIOSA Traditional Czech Beads™ brand.

PRECIOSA Chili™
ART No.: 111 01 357
SIZE: 4 x 11 mm



PRECIOSA Farfalle™
ART No.: 321 90 001
SIZE: 3 mm



PRECIOSA Rocailles
ART No.: 331 19 001
SIZE: 11/0 mm



 PRECIOSA | Traditional Czech Beads

BEAD SHOP ZÁSADA
468 25 Zásada
+420 488 117 743
beadshop@preciosa.com
50°41'49 N, 15°15'55 E

GLASS SHOP DESNÁ
Krkonoská, 468 61 Desná
+420 488 117 525
glassshop@preciosa.com
50°45'41 N, 15°19'7 E

preciosa-ornela.com
facebook.com/PreciosaOrnela

April 2017 © PRECIOSA ORNELA, a.s.



 PRECIOSA | Traditional Czech Beads



PASSION FLOWER

PRECIOSA Chili™ A PRECIOSA Farfalle™ BRACELET

Our new PRECIOSA Traditional Czech Beads™ beautifully complement each other. Create an elegant bracelet with this project designed by Hana Černá.

Material for one flower:

PRECIOSA Chilli™ (CH)
111 01 357; 4 x 11 mm; 23980/28101; 24 pcs

PRECIOSA Fire Polished Beads (FPB12)
151 19 001; 12 mm; 00030; 1 pc

PRECIOSA Pressed Beads (PB4)
111 19 001; 4 mm; 202010/15435; 12 pcs

PRECIOSA Farfalle™ (F)
321 90 001; 2 x 4 mm; 0005h; 6 pcs

PRECIOSA Rocaille (R11)
331 19 001; 11/0; 26060; 2 g

Tools:

Nymo or other beading thread; needle; scissors

Difficulty:

Procedure:

Step 1:
Pick up two CH (facing each other) using the lower hole along with an R11 and F in this order:

1 F, 1 CH, 1 R11, 1 CH.

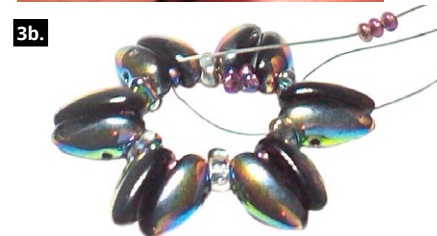
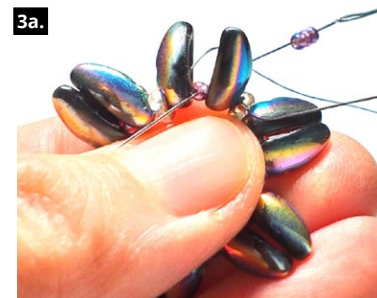
Repeat this set 6x as shown on Figure 1a and Figure 1b.



Step 2:
Once all six sets are threaded, tie into a circle as shown in Figure 2a and Figure 2b.



Step 3:
Exit with the needle from R11 between a pair of CH, pick up 3x R11 and again thread the needle through R11 between the CH in the direction of the thread. A set of four seed beads will form between the Chilli beads as shown in Figure 3a and Figure 3b.



Step 4:
Create this set of four R11 6x – between each CH pair in the circle as shown in Figure 4a. Next thread through the second CH hole as shown in Figure 4b.



Step 5:
Now pick up a 4 mm PB4 and R11 and thread the needle through the next CH. Continue adding PB4 and R11 between each set of CH in the circle. The flower will start to take shape as shown in Figure 5a, Figure 5b, and Figure 5c.



Step 6:
Exit the R11 with the needle from the upper set of four seed beads. This R11 set will act as the foundation for the second level of the flower. Pick up sets of 2 CH (through the lower hole) between the top R11 as shown in Figure 6a and Figure 6b.



Step 7:
Once the second circle of CH is finished exit with the needle through the second hole of the CH and pick up a PB4, pass the needle through the next CH and pick up another PB4. Continue in this way until you have added a total of six PB4. See Figures 7a and 7b.

