

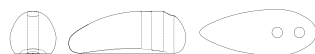


DESIGN BY HELENA CHMELÍKOVÁ

PRECIOSA ORNELA presents the new PRECIOSA Chilli™ pressed bead from the PRECIOSA Traditional Czech Beads brand.



PRECIOSA Chilli™
 ART No.: 111 01 357
 Size: 4 x 11 mm



PRECIOSA Rocailles
 ART No.: 331 19 001
 Size: 6/0



PRECIOSA Rocailles
 ART No.: 311 19 001
 Size: 6/0



PRECIOSA | Traditional Czech Beads

BEAD SHOP ZÁSADA
 468 25 Zásada
 +420 488 117 743
 beadshop@preciosa.com
 50°41'49 N, 15°15'55 E

GLASS SHOP DESNÁ
 Krkonošská, 468 61 Desná
 +420 488 117 525
 glassshop@preciosa.com
 50°45'41 N, 15°19'7 E

preciosa-ornela.com
 facebook.com/PreciosaOrnela

August 2015 © PRECIOSA ORNELA, a.s.

PRECIOSA | Traditional Czech Beads



PINCH OF Chilli

DELICATE THINGS MADE USING PRECIOSA Chilli™ BEADS

PRECIOSA ORNELA presents the new **PRECIOSA Chilli™** pressed bead from the PRECIOSA Traditional Czech Beads brand. The elongated imaginative shape supplements the popular range of two-hole beads with which it has an identical hole spacing. The axially deviated holes predestine this bead for simple compositions in the form of a zip in the case of a regular stringing on a strong or flexible material, during which the ridge of the bead excellently interlocks into the side groove of the adjacent one. The flattened shape and the side orientation of the holes enable the creation of flat relief applications in combination with round beads and seed beads up to a size of 4 mm. It is also suitable for use with the PRECIOSA Pip™, PRECIOSA Solo™ or PRECIOSA Thorn™ beads. This new bead is suitable for all types of surface finishes.

Materials and Tools:

PRECIOSA Chilli™ (**Ch**)
111 01 357; 4 x 11 mm;
02010/15495 pink;
02010/28701 white;
00030/29121 orange;
4x for the small part; 6x for the large part;
12x for the clasp



PRECIOSA Rocaillon (**R6**)
331 19 001; 6/0;
16298 pink;
28020 purple;

311 19 001; 6/0;
93110 orange;
1x for the small part; 1x for the large part;
6x for the clasp



the earrings:
earring hooks, 6 mm rings



the pendant:
a cord with an end piece,
6 mm rings

the clasp:
glue for non-absorbent material,
a 2.7 cm long French clasp



the necklace:
a chain, 6 mm rings, ovals,
a carabiner, a counter-ring



a 0.20 mm nylon line; a thin needle; scissors;
flat nose pliers (for flattening the end of the
line and closing the rings); snipping pliers

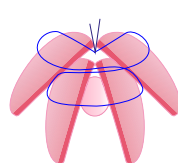


Difficulty:

Procedure:

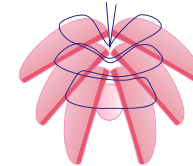
The small part

String 1x **Ch**. Start by threading the line through the outer hole from the inside in the direction from the dimple. Thread the line through the central hole from outside on the arch. String 2x **Ch**. Thread the line through the outer hole from the outside and through the second hole from the inside. Thread the line through the central hole from the outside at the second bead. String 1x **R6**. Thread the line through the second hole of the adjacent **Ch**. Once again, thread the line through the outer holes of the two strung **Ch**. String 1x **Ch**. Thread the line through the central hole from the inside. Thread the line through the outer hole from the outside. Tie off the ends of the lines with three knots. Cut it off 1 to 2 mm from the knots.



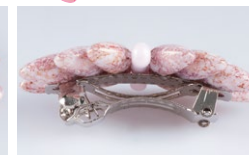
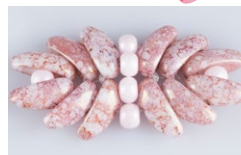
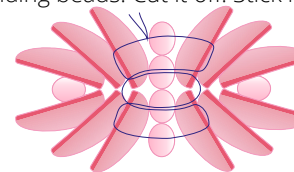
The large part

Use the same procedure as you used to make the small part. However, string a further 2x **Ch** instead of the **R6**. Then insert 1x **R6** between them.



The hair clasp

Create two large parts. Connect them with rocaillon. Thread the line through the central hole from the outside of one upper **Ch**. Thread the line through the outer hole of the same **Ch** from the inside. String 1x **R6**. In the second part, thread the line through the outer hole of the adjacent **Ch** from the outside. Move to the second upper **Ch** in the adjacent part. Thread the line through the outer hole from the inside. String 1x **R6**. Pass to the second top **Ch** in the initial part. Thread the line through the outer hole from the outside. Then thread the line through the central hole from the inside. String 1x **R6**. Thread the line through both holes of the top **Ch** in the adjacent part. Thread the line through the **R6** again. Thread the line through the outer hole of both **Ch** from the initial part. Thread the line through the **R6**. Add both holes of the adjacent **Ch** again. String 1x **R6**. Tie off the ends of the lines with three knots and pull them into the surrounding beads. Cut it off. Stick it onto the clasp.



It is possible to use the small or large parts to create earrings, a pendant for a mobile phone or a necklace on a chain. Use the created central opening. Thread rings through it. You can stick the small part to a clasp.

