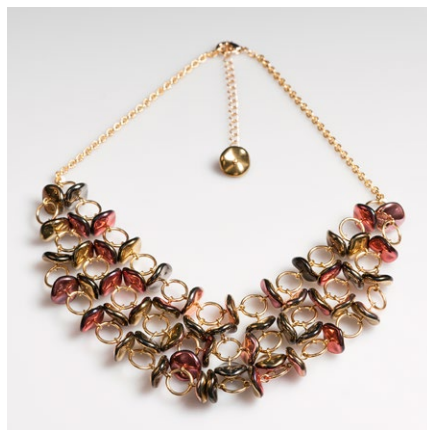




DESIGN BY HELENA CHMELÍKOVÁ

PRECIOSA ORNELA presents the new PRECIOSA Ripple™ pressed bead from the PRECIOSA Traditional Czech Beads brand.



 PRECIOSA | Traditional Czech Beads


**BEAD SHOP ZÁSADA**  
468 25 Zásada  
+420 488 117 743  
beadshop@preciosa.com  
50°41'49 N, 15°15'55 E

**GLASS SHOP DESNÁ**  
Krkonoská, 468 61 Desná  
+420 488 117 525  
glassshop@preciosa.com  
50°45'41 N, 15°19'7 E

preciosa-ornela.com  
facebook.com/PreciosaOrnela

January 2015 © PRECIOSA ORNELA, a.s.



 PRECIOSA | Traditional Czech Beads



# Ripple ring necklace

Necklace made using rings and PRECIOSA Ripple™ pressed beads

preciosa-ornela.com © PRECIOSA ORNELA, a.s.



Necklace made using rings and PRECIOSA Ripple™ pressed beads

Making a luxurious and original piece of jewelry need not only be the work of a master craftsman. We will show you how to achieve this using the new PRECIOSA Ripple™ pressed bead in combination with gold rings.

**PRECIOSA ORNELA** presents the new **PRECIOSA Ripple™** pressed bead from the **PRECIOSA Traditional Czech Beads** brand. This round bead with dimensions of 12 mm has a centrally located hole and a rippled surface on both sides. The identical profile on both sides of the bead enables their 100% use during the application of a series of ten new types of combined, dual colored vacuum decors known as California. The rippled surface of the bead brings warmth to the metallic decors in both the mat and polished finish.

This simple tutorial will enable you to find out what it is like to work with PRECIOSA Ripple™ beads and to create a luxurious necklace. The combination of several color shades with metallic reflections will enable you to achieve an interesting effect which will be set off excellently by the gold rings. The geometrical shapes resonate with the rippled beads and are reminiscent of a fishing net in which shiny fish have been caught.

PRECIOSA ORNELA wishes you a lot of fun and inspiration during your beadworking.

### Materials and Tools:

PRECIOSA Ripple™ (Rip)  
111 01 351; 12 mm;  
gold-pink; 98544 (14x)



111 01 351; 12 mm;  
gold-orange/pink 98542 (14x)



111 01 351; 12 mm;  
gold-brown bronze 98543 (13x)



111 01 351; 12 mm;  
gold-chrome 98547 (13x)



### Metal parts:

10 mm rings (33x); 14 mm eye pins (52 ks);  
an 18 mm eye pin; a 12 mm eye pin; 2x 10  
cm chains (large links); a 7 cm adjusting  
chain; a carabiner; ovals; needle nose pliers;  
flat nose pliers (for closing and straightening  
the rings); snipping pliers; a ruler

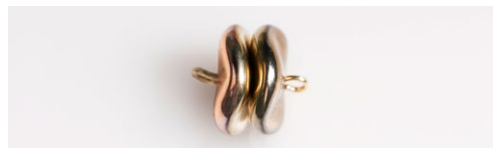
Difficulty: ●●●●●



### Procedure:

Step 1:  
Mix up all the **Rip**.

Step 2:  
String 2x **Rip** onto the longer eye pin and  
use the needle nose pliers to form an eye  
at each end. Make both the eyes at the  
same level. You will use this fragment in the  
central part of the lower row in the necklace.



Step 3:  
String 1x **Rip** onto an eye pin and create an  
eye using the needle nose pliers. Use it at  
the end of the adjusting chain.

Necklace made using rings and PRECIOSA Ripple™ pressed beads



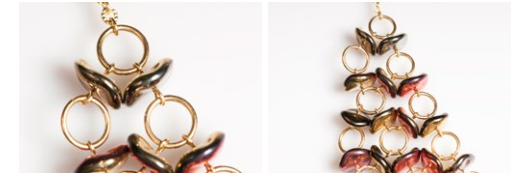
Step 4:  
String all the other **Rip** onto a shorter eye pin  
one at a time and create an eye at each end  
with the needle nose pliers. Make both the  
eyes at the same level.

Linking: grasp the end of the eye pin as high  
as possible between the points of the needle  
nose pliers and create an eye which you  
should move slightly back so that it is located  
centrally above the hole.



Step 5:  
Arrange the **Rip** and the rings according to  
the photograph of the necklace. Use the rings

to connect four **Rip** (or merely two or three  
at the edges). Open a ring using the needle  
nosed pliers and string the eyes from the  
eye pin according to the required number of  
**Rip**. Close the ring. When using rings of this  
size, it is possible to close the rings with your  
fingers or you can use the flat nose pliers.



Step 6:  
Snip off the required lengths of chain.  
Attach them to the uppermost rings.  
Attach the carabiner and the adjusting chain  
on opposite sides of the necklace using the  
ovals.

