



"TARA" bracelet

Fast and easy bracelet made out of two-hole beaded components



Material:

(for one component - you will need 3 - 4 components for a bracelet)

Matubo Miniduo (24 pcs)

Matubo Rulla (4 pcs)

15/0 Japanese seed beads (approx. 0,5 gram)

11/0 Japanese seed beads (approx. 0,5 gram)

Beading needle and thread (Nymo, Fireline)

For finishing the bracelet:

Beading wire

Crimp beads, bead tips, jump rings, a clasp

4mm round beads (or other kind of smaller beads)

12mm Pyramid Studs, Hexagon Pyramids, two-hole squares or other type of large two-hole beads.

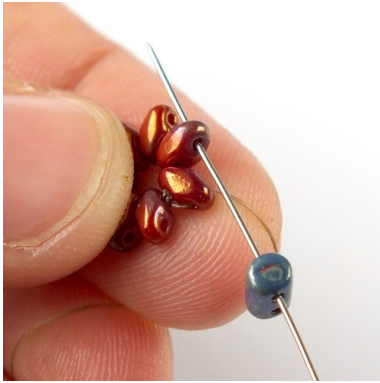
Difficulty: Beginner/Intermediate



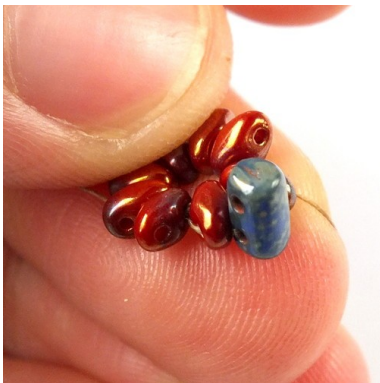
1) String eight Miniduos.



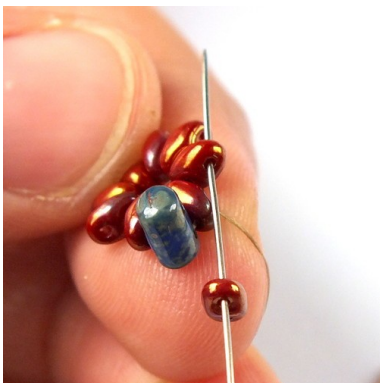
2) Slide all the beads to the end of the thread. Tie a square knot to form a circle, then pass through the upper hole of the nearest Miniduo.



3) Add one Rulla and pass through the upper hole of the next Miniduo.



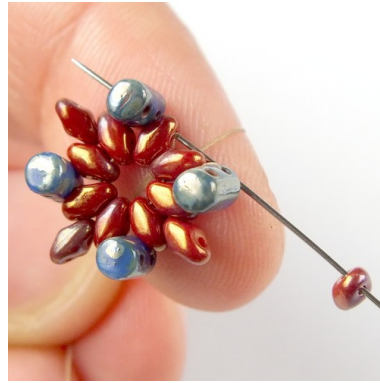
4) Pull snug.



5) Add one Miniduo and pass through the upper hole of the next Miniduo.



6) Repeat steps 3, 4 and 5, until you reach the end of the row.



7) At the end of the row add one last Miniduo and then pass through the upper hole of the last Miniduo and through the lower hole of the first Rulla.



8) Then pass back through the upper hole of the same Rulla.

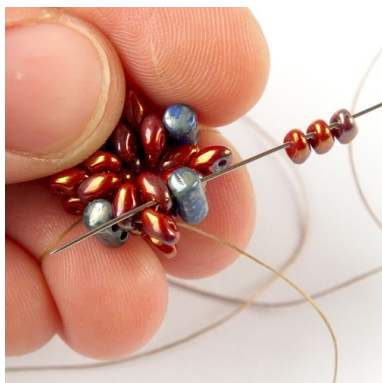


9) Add three Miniduos and pass through the upper hole of the next Rulla.

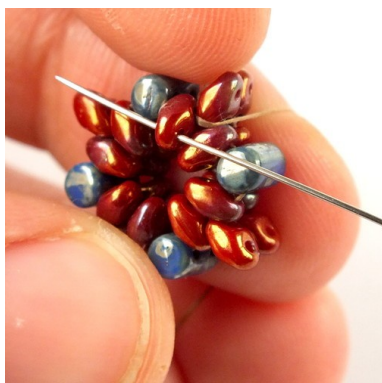


10) Now you need to align the new Miniduos - the first one should face "inwards", the second one should face "outwards" and the third one should face "inwards" again.

11) Repeat steps 9 and 10, until you reach the end of the row.

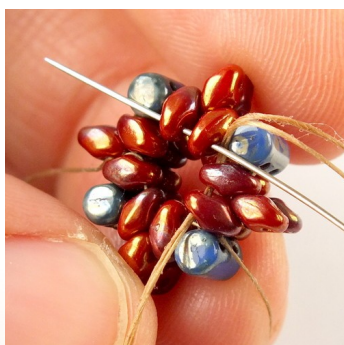


12) At the end of the row add the last three Miniduos. Then pass through the last Rulla and through the "upper" hole of the next Miniduo.



13) Then pass back through the other hole of the same Miniduo.

14) Now weave through the lower holes of all the eight Miniduos in the center. If you have trouble keeping the right tension, you can pass through them once or twice more.



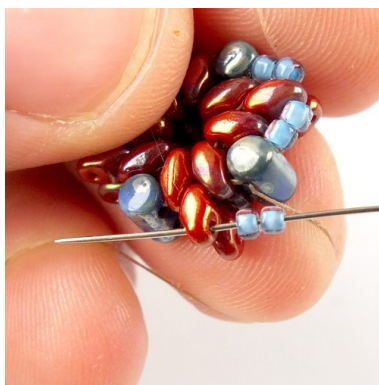
15) After you secure the center of the square, pass through the upper hole of the same Miniduo the thread is exiting from. Then weave through beads to get to the nearest Rulla.



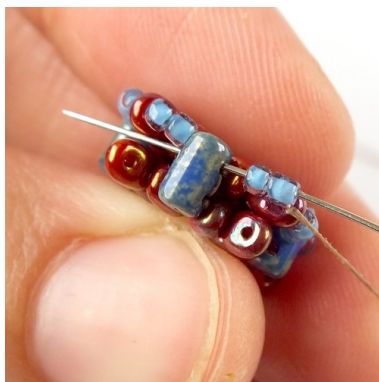
16) Add two 11/0s and pass through the upper hole of the Miniduo in the nearest corner.



17) Add another two 11/0s and pass through the upper hole of the next Rulla.



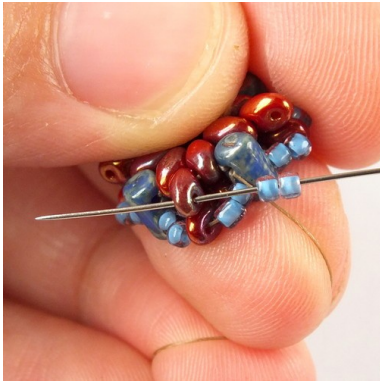
18) Repeat steps 16 and 17 ...



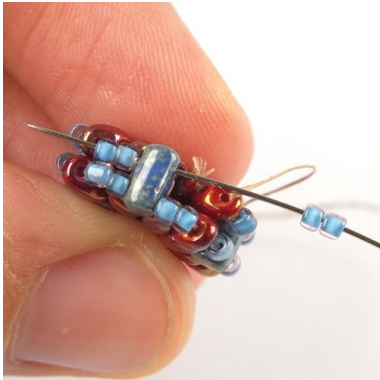
19) ... until you reach the end of the row. At the end of the row add the last pair of 11/0s and pass through the next Rulla.



20) Then pass back through the other hole of the same Rulla.



21) Repeat steps 16 - 19 on the other side of the component.



22) When you reach the end of the row, add the last pair of 11/0s, pass through the nearest Rulla and then through the first pair of 11/0 you added in this row.



23) Add four 15/0s and then pass through the next two 11/0s, one Rulla and two 11/0s.



24) Repeat step 23, until you reach the end of the row.

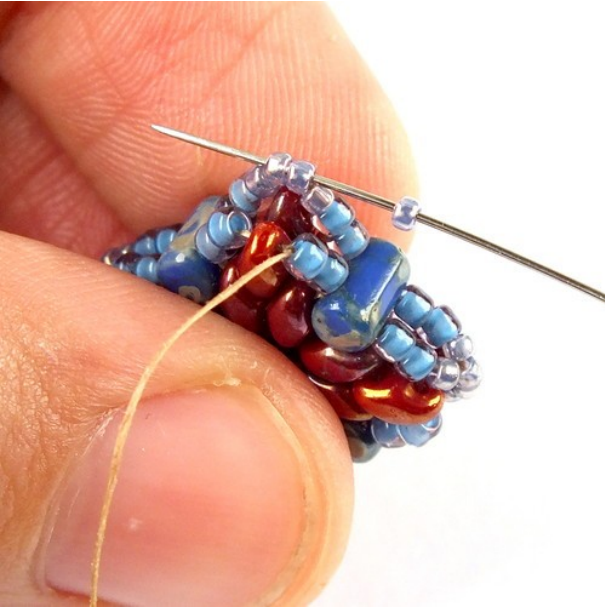
25) When you finish the row, pass through the first three 15/0s you added in this row.



26) Add one 15/0 and then pass through the next two 11/0s, one Rulla and two 11/0s on the other side of the component.



27) Add one 15/0 and then pass through the two 15/0s in the middle of the next corner.



28) Add one 15/0 and then pass through the next two 11/0s, one Rulla and two 11/0s on the other side of the component.



29) Repeat steps 27 and 28, until you reach the end of the row. Tie a few half-hitch knots and cut off all the remaining thread.

Finishing the bracelet

Prepare a piece of beading wire - approximately 2,5 times longer than the desired length of the bracelet. Fold it in half. String a crimp bead on the wire and let it slide to the fold. Now squish the bead with flat-nose pliers.



Take a bead tip and string it on both ends of the wire - open side first - so the crimp bead goes inside the bead tip.



Now close the bead tip.

String one 11/0 on both ends of the wire. Then string one 15/0, one 11/0 and one 4mm round on each end of the wire.



Now you can start stringing the two-hole beads. I added one 15/0 on each end of the wire, then I strung the hexagon pyramid bead and then I added one 15/0 and one 4mm round on each end.



Then string the beaded component ...



... like this.

Continue in the similar manner until you reach the desired length.



At the end add one 4mm, one 11/0 and one 15/0 on each end of the wire and then one 11/0 on both ends.



And then use a bead tip with a crimp bead to finish the bracelet.



Add a clasp of your choice.



Now the bracelet is finished.

Tip: You can use two colors of Miniduos in this project.

If you use one color for each side of the component and then combine them with flat two-hole squares, you will get a double-sided bracelet.



Or you can try to make a pattern on each component. Here I used dark bronze Miniduos for the center and chalk lila gold lustered Miniduos in the corners.

