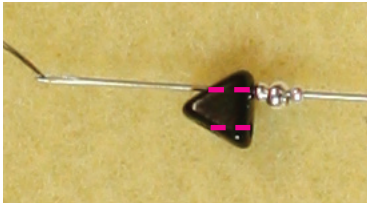


the
BEADSMITH[®]
Puca Component

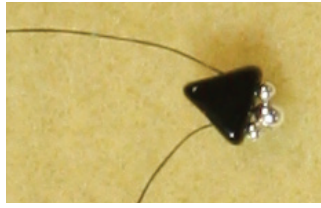


MATERIALS:

1. **(KP)** Kheops Puca beads (# KHP06-23980)
3. **(MB)** Matubo beads (# MTB07-23980)
4. **(R11, R15)** 11/0 and 15/0 Seed Beads (# MT11-SLV-TB, # MT15-SLV-TB)
8. 6 lb Fireline in Smoke (# FL06SG125)
9. #10 Beading Needle (# BN10)



1. Thread 1 KP backwards, 1 R15, 1 R11 & 1 R15



2. Continue back through the Puca beads other hole.



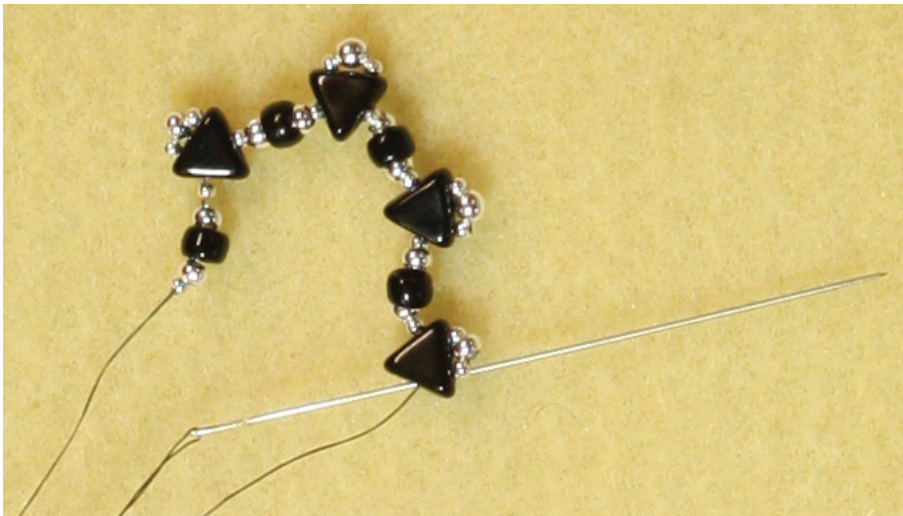
3. Add 1 R15, 1 R11, 1 MB, 1 R15 & 1 R11.



3. Add 1 KP backwards, 1 R15, 1 R11 & 1 R15 and repeat step 2.



4. Repeat step 3 two more times, and then add 1 R15, 1 R11, 1 MB, 1 R15 & 1 R11.



5. Loop back around to the very first Puca bead you threaded and pass needle through the first hole.



6. Pull thread tightly to create a ring. And follow back through the path you just made until you come out the second Puca.



6. Add 1 KP, 1 R15, and 1 KP and pass needle through the top group of seed beads and Matubo. (see arrow in image)



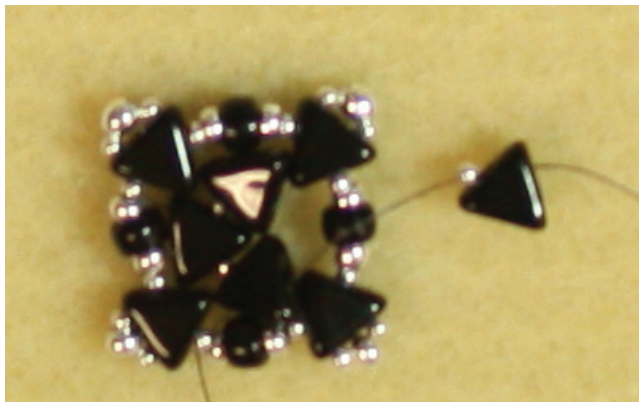
7. Bring needle down through the Puca beads other hole.



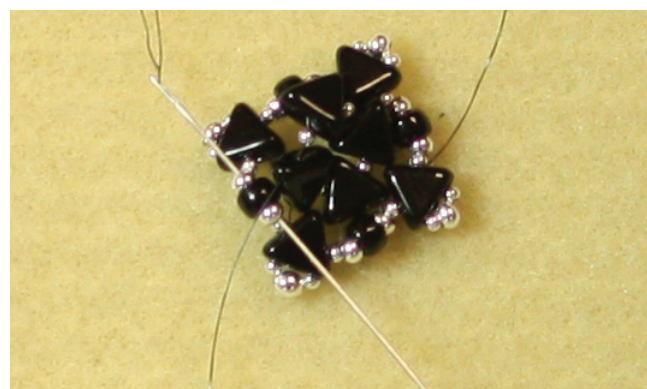
8. Add 1 R15, and 1 KP and pass through the next set of seed beads and Matubo bead.



9. Like in step 7, pass needle through the other hole of the puca bead.



10. Add 1 R15 and 1 KP.



11. Pass through the last set of seed beads and Matubo, and come back down through the other hole in the Puca like in step 9



11. Add one more 1 R15 and continue back through the center beads for one more pass to reinforce it.

Use this component as earrings, part of a bracelet or even a necklace

